

**FE Series**



The Passionate Pursuit of Perfection

[www.bole-machinery.com](http://www.bole-machinery.com)

**BOLE Customer Service Center**

**BOLE MACHINERY**

ADD: No.99 Weisan Road, Xiaogang, Ningbo, China

PC: 315821

TEL: +86-574-86188007

FAX: +86-574-86188008

E-mail: [bole-sales@bole-machinery.com](mailto:bole-sales@bole-machinery.com)

THIS CATALOGUE ARE PROTECT BY LAW OF COPY RIGHT.  
ANY USE WITHOUT THE EXPRESS PERMISSION OF THE LAW OF COPY RIGHT,  
MUST GET APPROVAL OF BOLE IN ADVANCE.

THIS VERSION WAS PRINTED IN JUNE 2019,  
ANY DIFFERENCE SPECIFICATION FROM OLD VERSION SHOULD BE SUBLECT TO THIS VERSION.

**FE Series**  
**Electrical Injection**  
**Moulding Machine**



Injection Moulding Machine

## Technical Data

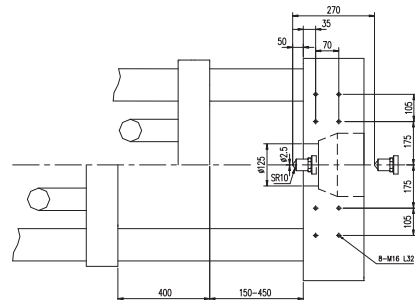
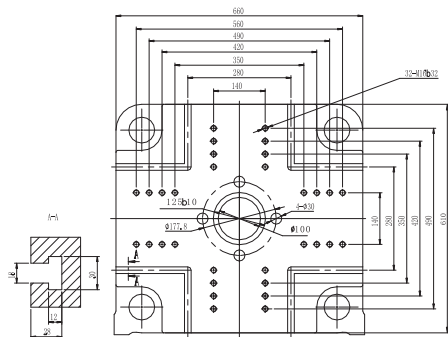
Injection Unit	
Screw Specification	
Screw Diameter	mm
Screw L/D Ratio	mm
Screw Stroke	mm
Injection Capacity	cm <sup>3</sup>
Shot weight(PS)	g
standard injection unit	
Injection Speed	mm/s
Injection Rate	cm <sup>3</sup> /s
Injection Pressure	MPa
Holding Pressure	MPa
high speed injection unit	
Injection Speed	mm/s
Injection Rate	cm <sup>3</sup> /s
Injection Pressure	MPa
Holding Pressure	MPa
Screw Speed	rpm
Clamping Unit	
Clamping Force	kN
Tie-bar Distance (h×v)	mm
Opening Stroke Max	mm
Mold Height Min	mm
Mold Height Max	mm
Max Daylight	mm
Ejector Stroke	mm
Ejector Force	kN
Number of ejector rods	PCS
Other	
Total power	KW
Machine dimensions(LXWXH)	m
Net weight(appro.)	ton

BL110FE				BL150FE				BL180FE				BL230FE				BL280FE				BL350FE			
AA	A	B	C	AA	A	B	C	AA	A	B	C	AA	A	B	C	AA	A	B	C	AA	A	B	C
25	28	32	36	28	32	36	40	32	36	40	45	36	40	45	50	40	45	50	55	45	50	55	60
23	23	23	23	23	23	23	23	23	23	23	23	23	23	23	23	23	23	23	23	23	23	23	23
140				160				180				200				230				260			
69	86	113	143	99	129	163	201	145	183	226	286	204	251	318	393	289	366	452	546	414	511	618	735
63	78	102	130	90	117	148	183	132	167	206	261	185	229	289	357	263	333	411	497	376	465	562	669
E225				E325				E400				E570				E800				E1100			
190	190	190	190	185	185	185	185	200	200	200	200	190	190	190	190	190	190	190	190	165	165	165	165
81	102	133	168	102	133	168	207	133	168	207	262	168	207	262	324	207	262	324	392	262	324	392	467
328	261	200	158	331	253	200	162	313	247	200	158	313	253	200	162	313	247	200	165	269	218	180	151
262	209	160	126	264	203	160	130	250	198	160	126	250	203	160	130	250	198	160	132	239	194	160	134
E225H				E325H				E400H				E570H				E800H				E1100H			
330	330	330	330	330	330	330	330	330	330	330	330	250	250	250	250	250	250	250	250	250	250	250	250
161.99	203.2	265.4	335.9	203.2	265.4	335.9	414.69	265.4	335.9	414.69	524.84	254.47	314.16	397.61	490.87	314.16	397.61	490.87	593.95	397.61	490.87	593.96	706.86
328	261	200	158	331	253	200	162	313	247	200	158	313	253	200	162	313	247	200	165	269	218	180	151
262	209	160	126	264	203	160	130	250	198	160	126	250	203	160	130	250	198	160	132	239	194	160	134
400				350				350				300				300				300			
Clamping Unit																							
1100				1500				1800				2300				2800				3500			
460X410				510X460				560X510				660X610				710X660				810X760			
400				450				500				600				650				750			
150				180				200				200				220				240			
450				500				550				650				700				800			
850				950				1050				1250				1350				1550			
100				120				130				130				150				150			
30				35				45				45				50				60			
5				5				5				13				13				13			
Other																							
52.6				59.6				60.5				70.2				110.3				156			
5.085 × 1.37 × 2.14				5.809 × 1.48 × 2.3				6.064 × 1.48 × 2.33				6.829 × 1.792 × 2.478				7.376 × 1.865 × 2.684				7.922 × 1.952 × 2.544			
4.2				5.7				6.9				8.5				11.5				15			

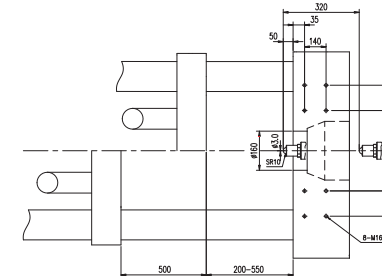
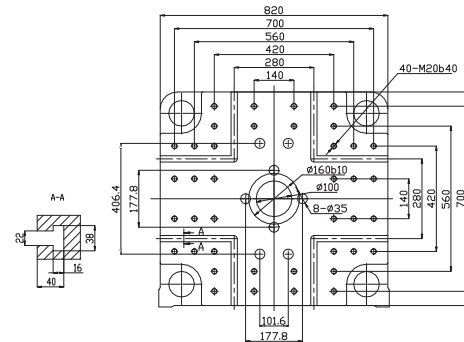
## Technical Data

Injection Unit	
Screw Specification	
Screw Diameter	mm
Screw L/D Ratio	mm
Screw Stroke	mm
Injection Capacity	cm <sup>3</sup>
Shot weight(PS)	g
standard injection unit	
Injection Speed	mm/s
Injection Rate	cm <sup>3</sup> /s
Injection Pressure	MPa
Holding Pressure	MPa
high speed injection unit	
Injection Speed	mm/s
Injection Rate	cm <sup>3</sup> /s
Injection Pressure	MPa
Holding Pressure	MPa
Screw Speed	rpm
Clamping Unit	
Clamping Force	kN
Tie-bar Distance (h×v)	mm
Opening Stroke Max	mm
Mold Height Min	mm
Mold Height Max	mm
Max Daylight	mm
Ejector Stroke	mm
Ejector Force	kN
Number of ejector rods	PCS
Other	
Total power	KW
Machine dimensions(LXWXH)	m
Net weight(appro.)	ton

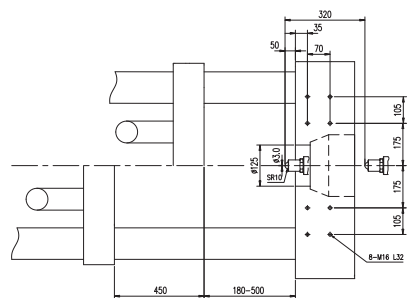
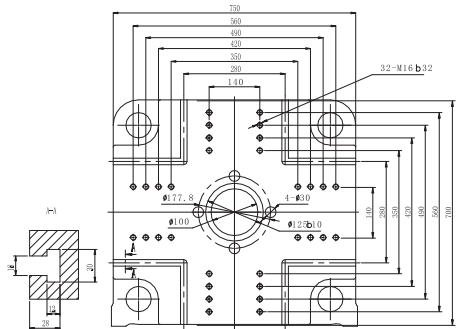
# Platen Dimensions & Machine Dimensions



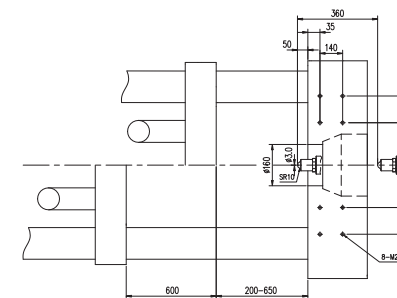
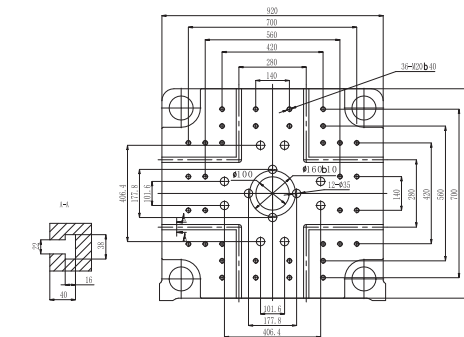
**BL110FE**



**BL180FE**

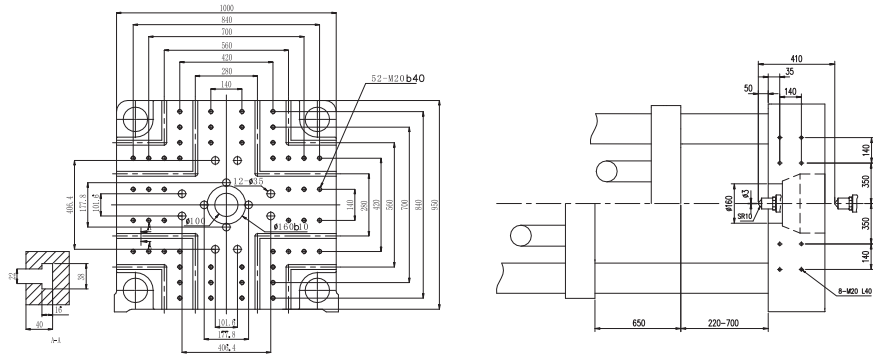


**BL150FE**

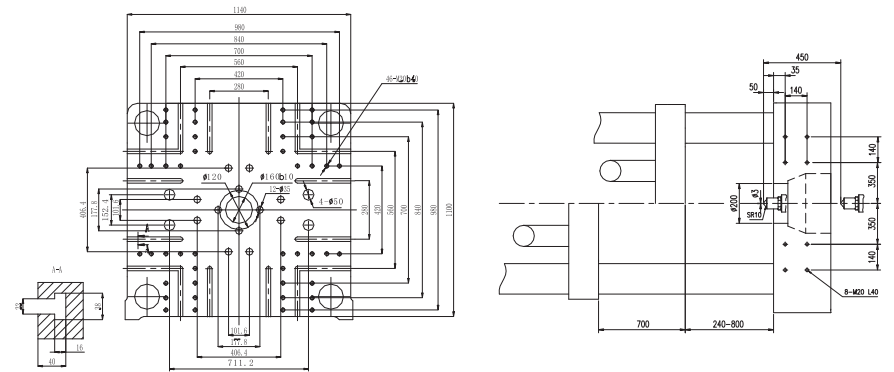


**BL230FE**

# Platen Dimensions & Machine Dimensions



**BL280FE**



**BL350FE**